

FEATURES

Apartment Homes In A Country Setting

Apartment Features:

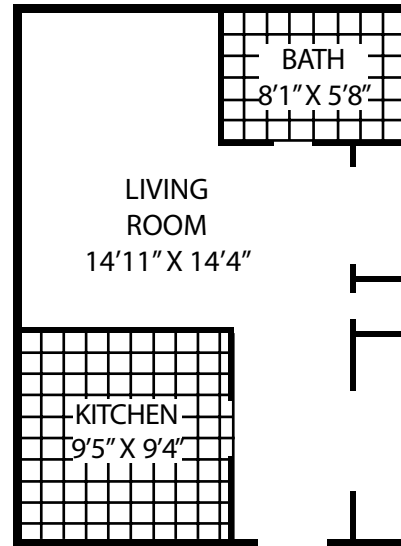
- Wood cabinetry
- Wall to wall carpeting
- Fire/Carbon monoxide alarms
- Air conditioning
- Comcast cable
- 24 hour emergency service
- Spacious living quarters
- Laundry room on site
- Cats permitted (fee)
- Outside parking (fee)

Rent Includes:

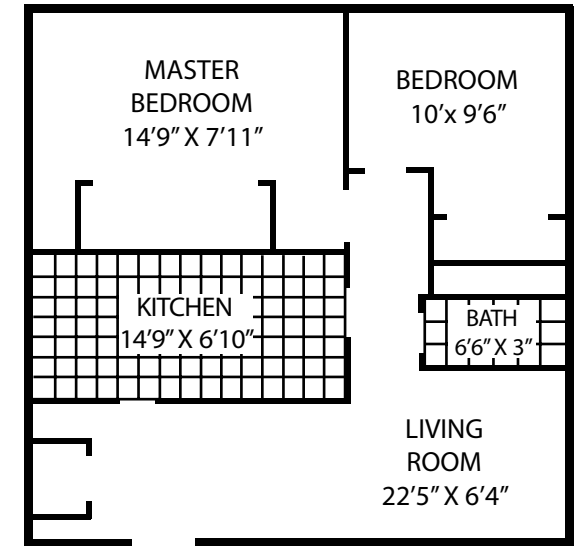
- Heat/Hot Water
- Cooking gas

FLOORPLANS

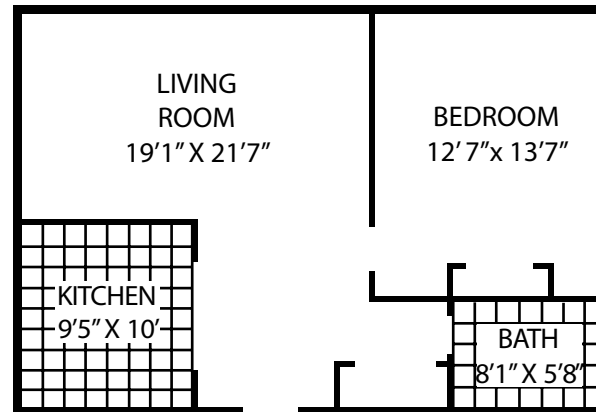
Typical 1 Bedroom



Typical 3 Bedroom



Typical 2 Bedroom



all dimensions are approximate

Useful Numbers:

Roselle Police Department

201 Chestnut Street, Roselle, NJ 07203
908-245-5600

Roselle Fire Department

725 Chestnut Street, Roselle, NJ 07203
908-245-8600

Roselle Post Office

104 Chestnut Street, Roselle, NJ 070203
908—245-3218

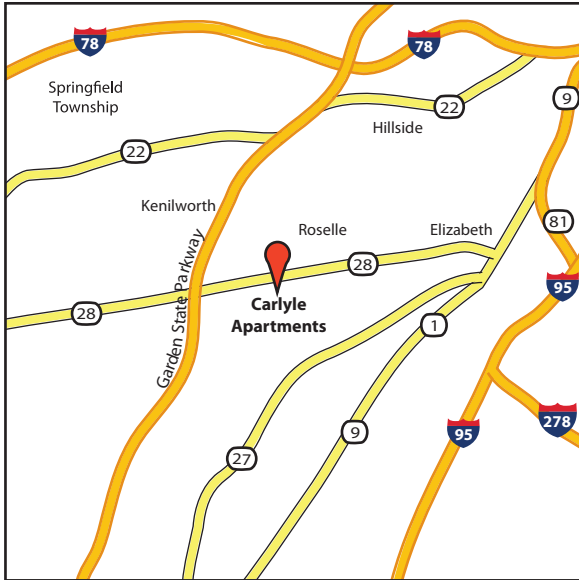
Roselle Borough Hall

210 Chestnut Street, Roselle, NJ07203
908-245-5600

Roselle Library

104 west 4th Avenue, Roselle, NJ 07203
908-245-5809

AREA MAP



Directions

From GSP Exit 137

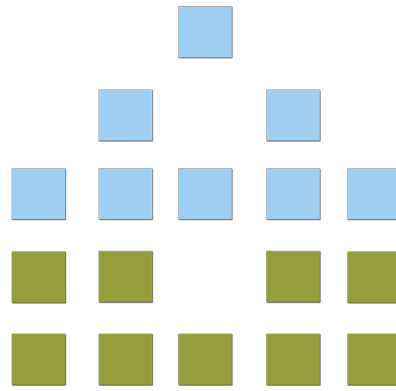
Make a left at North Ave., right onto Locust
After 2 blocks make a left onto West 2nd St.
Carlyle will be on the left

From 1&9

Take the Stiles St. exit to Elizabeth Ave.
Left onto Roselle St., left on West 2nd Ave.
Carlyle will be on the right

Local Attractions

- Close proximity to New York City
- Close to Newark International Airport
- Prudential Center & NJ PAC
- Close to plenty of shopping, restaurants and more!



www.salemmgmt.com

*Salem Management is committed
to creating communities*

We fit a home into every apartment



Carlyle Apartments

154 West Second Avenue
Roselle NJ, 07203
908-259-5783

CARLYLE APARTMENTS



We fit a *home* into every Apartment.®